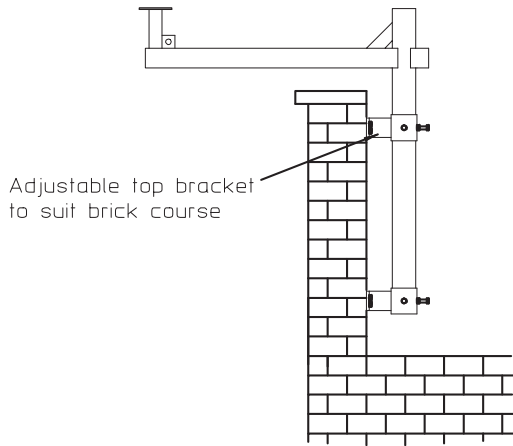
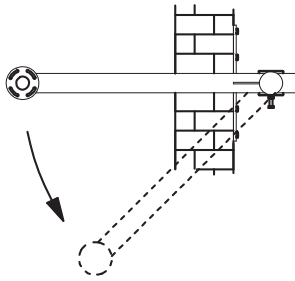


### Parapet Wall Mount Swing Arm

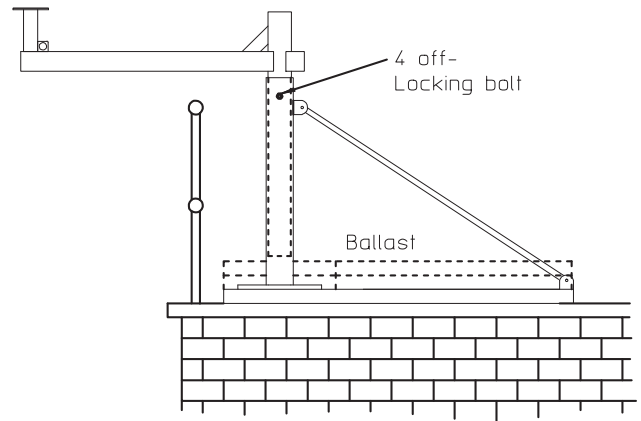


Internal & External corner mounts available

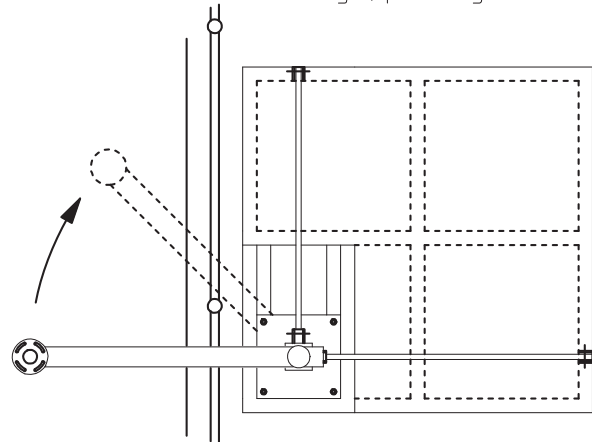


Rotates inboard to give safe access for camera servicing.

### Free Standing Swing Arm

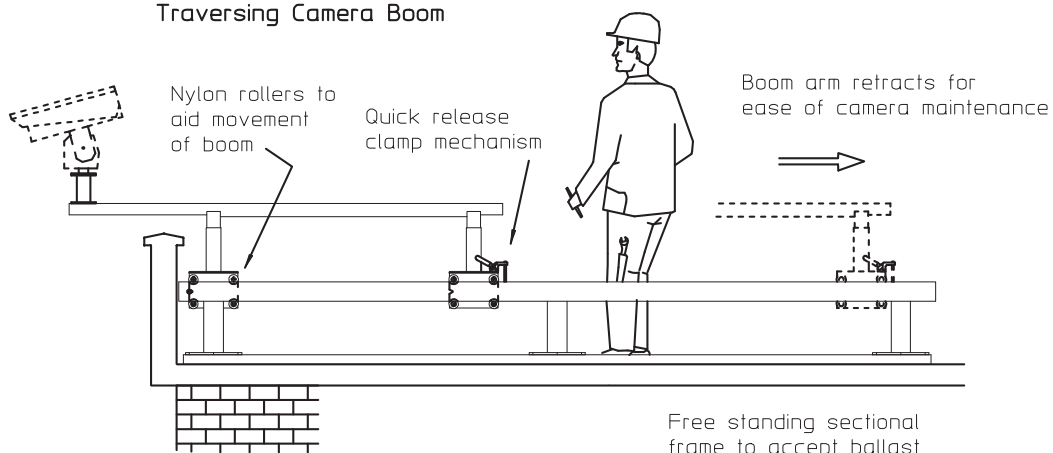


Ballast dependant upon arm length, post height and location.



Rotates inboard to give safe access for camera servicing.

### Traversing Camera Boom



Free standing sectional frame to accept ballast

#### Standards Applicable

**General Steelwork:**  
BS 1449:1991, BS 1387:1985  
BS EN 10025:1993

**Structural Steelwork:**  
BS EN 10210-1:1994  
BS EN 10210-2:1997

**Hot Dipped Galvanized:**  
BS EN ISO 1461:2009

**Welding Procedures:**  
Comply with BS EN 1011-2:2001

**Fasteners:**  
Grade 8.8 BS 3692:2001  
BS 4190:2001 DIN931, DIN934

**Design Wind Loading:**  
In accordance with CP3 chapter V Pt 2 & BS 6399 Pt 2:1997

**Paint finishes:**  
BS 4800 & RAL colour range