

# Assembly and Operation of WEC WD Camera Towers

## Tower Assembly

- 1 - Fasten section 'B' to 'C' with bolts provided and place in vertical position on pads protruding from concrete on Root section 'A'
- 2 - Place pivot bolt through hinge at top of 'A' & 'B'. Tighten fully, then release 1/2 turn to enable sections to pivot smoothly.
- 3 - Slide hand winch in to slot (reel down) ensuring that it locates fully to the bottom of slot.
- 4 - Run cable through hole 'E', locating in groove on u'side pulley wheels and fasten with shackle to Lug 'F.'
- 5 - Pull tower past horizontal and fasten rest of sections to desired height (10 mtrs max). Ensure all holes in horizontal members of mid sections 'C' face lowermost
- 6 - Winch tower into vertical position and secure on protruding pads with bolts provided.
- 7 - Never disconnect winch cable until all bolts are in position and fully secure.
- 8 - Once fully secure remove cable and winch unit

## Lowering Procedure

- 1 - Fit winch as in 3 & 4 above.
- 2 - Fit safety chain to brackets 'G' & 'F'.
- 3 - Remove bolts from bottom of tower, and pull tower out to the full extent of the chain.
- 4 - Reel in excess cable until chain just becomes slack.
- 5 - Remove chain and lower to desired position.

Note - The Heavy Duty Winch (WUA) is designed to lift load (reel in) when crank is turned clockwise. This action will produce a clicking sound within the mechanism. To lock load at desired position, release handle. To lower load (reel out) turn crank handle anti-clockwise. To lock load at desired position, turn handle clockwise until at least 2 clicks are heard inside the mechanism before releasing the handle.

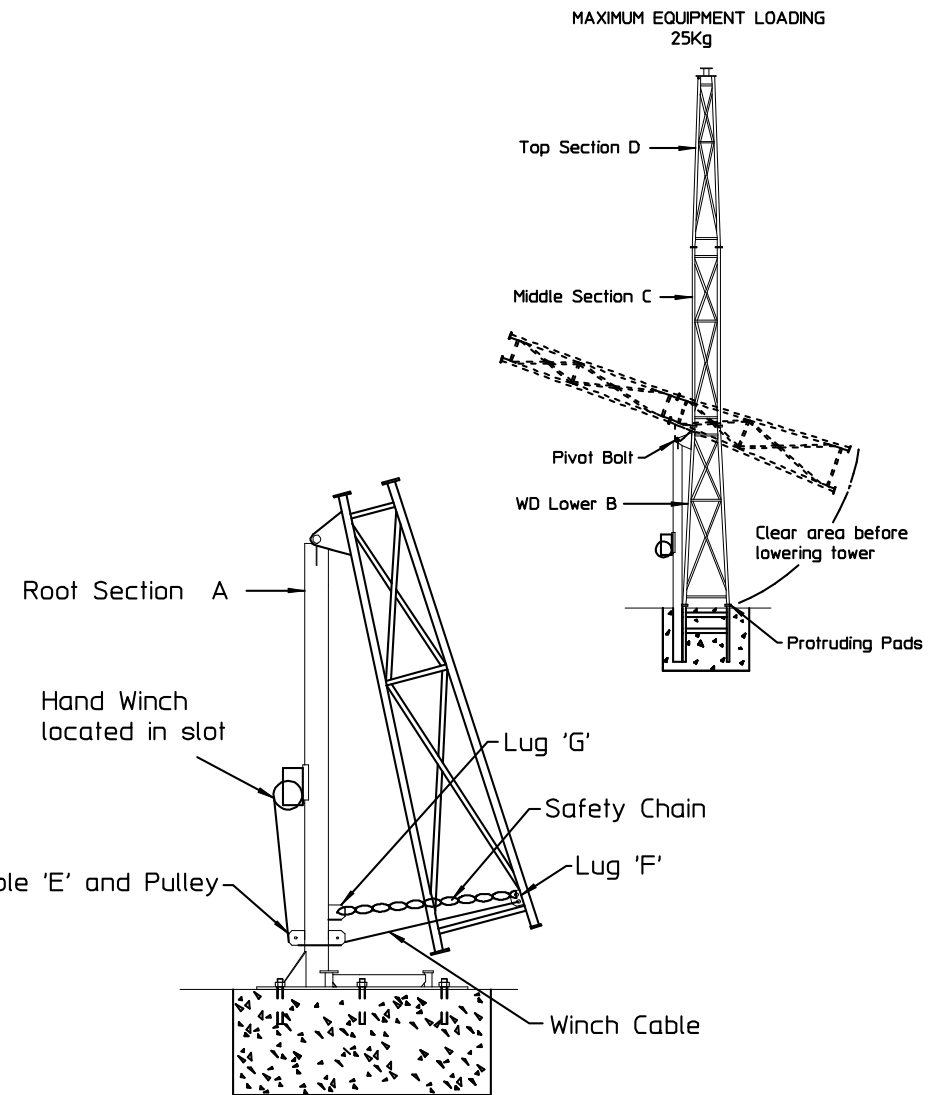
## Maintenance

- 1 - Periodically check all the tower sections for signs of wear and corrosion. Repair, treat or replace as required.
- 2 - Check winch cable for signs of damage or deterioration with every operation.
- 3 - Grease main gear wheel and tower pulleys on a regular basis.
- 4 - Check all bolts are tight.

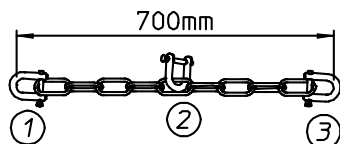
## Safety

When raising or lowering the tower, please ensure that all other persons, other than the operator are well clear of the area in which the tower is sited.

Ensure that all operatives are familiar with all operating instructions and procedures. WEC recommends Winch Training and offers suitable courses for operators



## Safety Chain Note



When using on WD Towers use full length of chain (1 - 3) (1-2 are for other WEC products)

1ST ANGLE PROJ'N 	UNITS:- mm	CUSTOMER	JOB / ORDER NUMBER	
DIMENSION TOL'CE	ANGLE TOL'CE	MATERIAL	TREATMENT OR FINISH	
GENERAL SURFACE FINISH 	SCALE 1:50	ASSEMBLY No.	No. OFF PER ASSY.	PART No.
DESCRIPTION FITTING & ASSEMBLY INSTRUCTION FOR WD TOWERS			DRAWING No. WEC-001-0532-4	
DRAWN S.Byrne	CHECKED	DATE 27th-May-2010	SUPERSEDES	
WELDING ENGINEERING LTD, BRITANNIA HOUSE, JUNCTION STREET, DARWEN, LANCASHIRE BB3 2RB. TEL: (01254) 773718 FAX: (01254) 873637				
ALL RIGHTS STRICTLY RESERVED. REPRODUCTION OR ISSUE TO THIRD PARTIES IN ANY FORM WHATSOEVER IS NOT PERMITTED WITHOUT WRITTEN AUTHORITY FROM THE PROPRIETORS.				

# A3